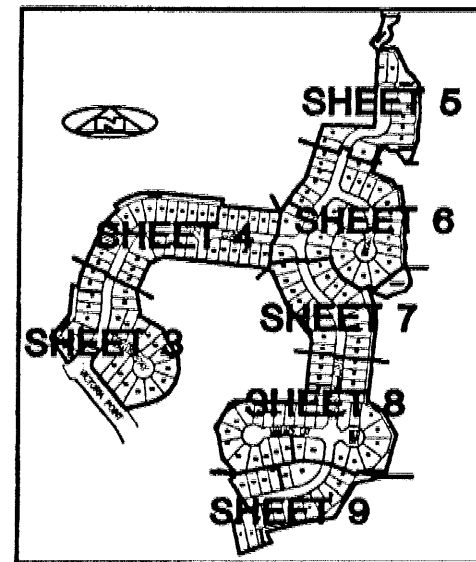
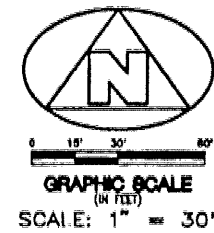
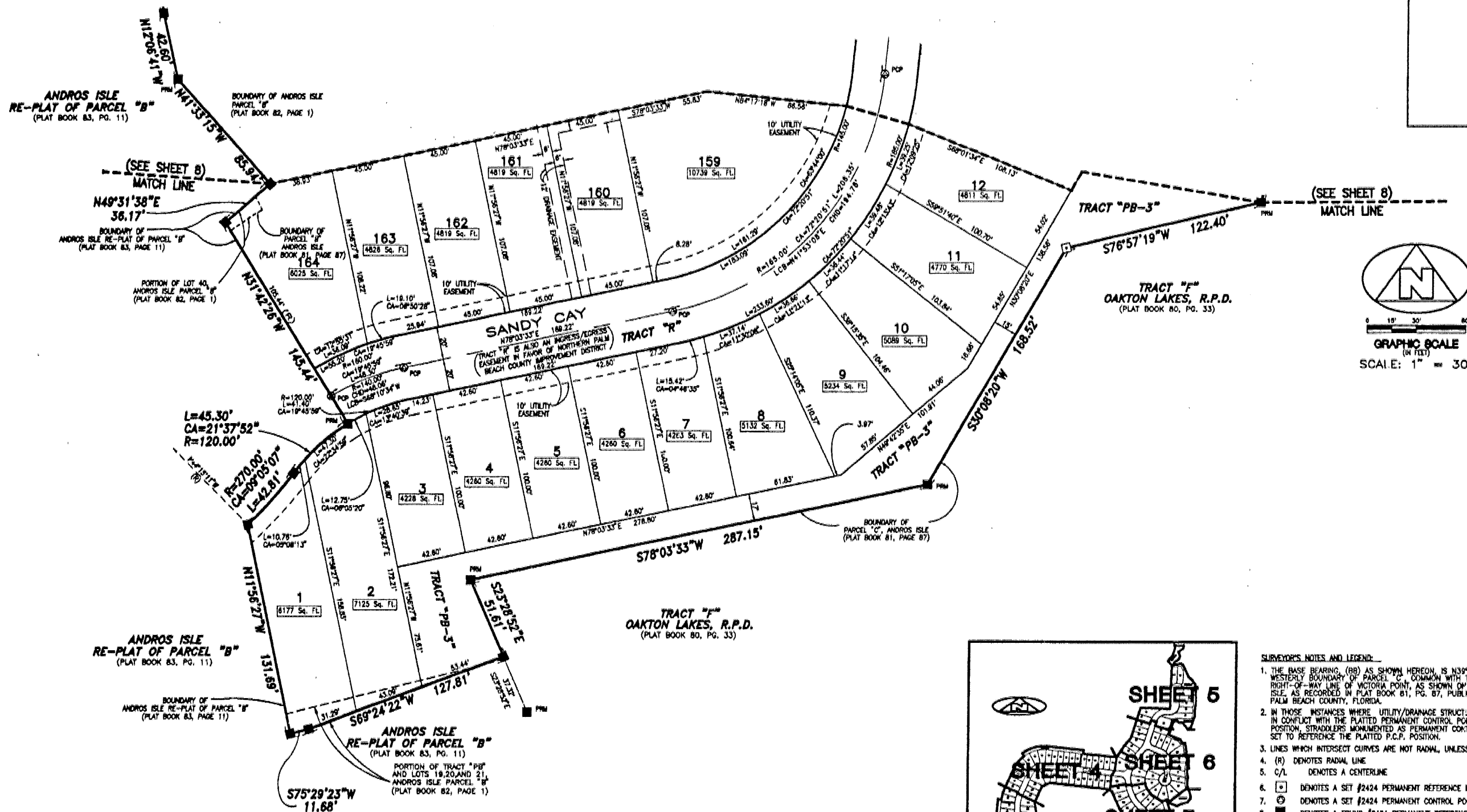


ANDROS ISLE PARCEL "C"



(A PART OF A RESIDENTIAL PLANNED DEVELOPMENT)
BEING A REPLAT OF PORTIONS OF ANDROS ISLE PARCEL "B" RECORDED IN PLAT BOOK 82, PAGE 1, BEING A REPLAT OF PORTIONS OF PARCEL "C", AND TRACT "L-3", ANDROS ISLE, RECORDED IN PLAT BOOK 81, PAGE 87, AND LYING IN SECTION 20, TOWNSHIP 43 SOUTH, RANGE 42 EAST, CITY OF WEST PALM BEACH, PALM BEACH COUNTY, FLORIDA



- SURVEYOR'S NOTES AND LEGEND:**
1. THE BASE BEARING (BB) AS SHOWN HEREON IS N30°18'42"W ALONG THE WESTERLY BOUNDARY OF PARCEL "C", COMMON WITH THE EASTERLY RIGHT-OF-WAY LINE OF VICTORIA POINT, AS SHOWN ON THE PLAT OF ANDROS ISLE, AS RECORDED IN PLAT BOOK 81, PG. 87, PUBLIC RECORDS, PALM BEACH COUNTY, FLORIDA.
 2. IN THOSE INSTANCES WHERE UTILITY/DRAINAGE STRUCTURES ARE CONSTRUCTED IN CONFLICT WITH THE PLATTED PERMANENT CONTROL POINTS (P.C.P.) POSITION, STRADDLERS MONUMENTED AS PERMANENT CONTROL POINTS WILL BE SET TO REFERENCE THE PLATTED P.C.P. POSITION.
 3. LINES WHICH INTERSECT CURVES ARE NOT RADIAL, UNLESS OTHERWISE NOTED.
 4. (R) DENOTES RADIAL LINE
 5. C/L DENOTES A CENTERLINE
 6. [Symbol] DENOTES A SET #2424 PERMANENT REFERENCE MONUMENT (P.R.M.)
 7. [Symbol] DENOTES A SET #2424 PERMANENT CONTROL POINT (P.C.P.)
 8. [Symbol] DENOTES A FOUND #2424 PERMANENT REFERENCE MONUMENT (P.R.M.)
 9. [Symbol] DENOTES A FOUND #2424 PERMANENT CONTROL POINT (P.C.P.)
- THIS INSTRUMENT WAS PREPARED BY WM. R. VAN CAMPEN, R.L.S., IN AND FOR THE OFFICES OF BENCH MARK LAND SURVEYING & MAPPING, INC., 4152 WEST BLUE HERON BOULEVARD, SUITE 121, RIVIERA BEACH, FLORIDA 33404
PHONE: (561) 848-2102 • FAX: (561) 844-8850
EMAIL: wrc@bmls.com WEB: http://members.aol.com/wrcsm

BENCH MARK LAND SURVEYING & MAPPING, INC.
4152 W. BLUE HERON BOULEVARD • SUITE 121
RIVIERA BEACH • FLORIDA 33404
PHONE: (561) 848-2102 • FAX: (561) 844-8850
EMAIL: wrc@bmls.com WEB: http://members.aol.com/wrcsm

RECORD PLAT
ANDROS ISLE
PARCEL "C"

OWN	BLM	FB	DATE 10-1-00	WO.#	PKG.C
CKD			FILE AND-CR.dwg	SCALE 1" = 30'	SHEET 9 OF 9